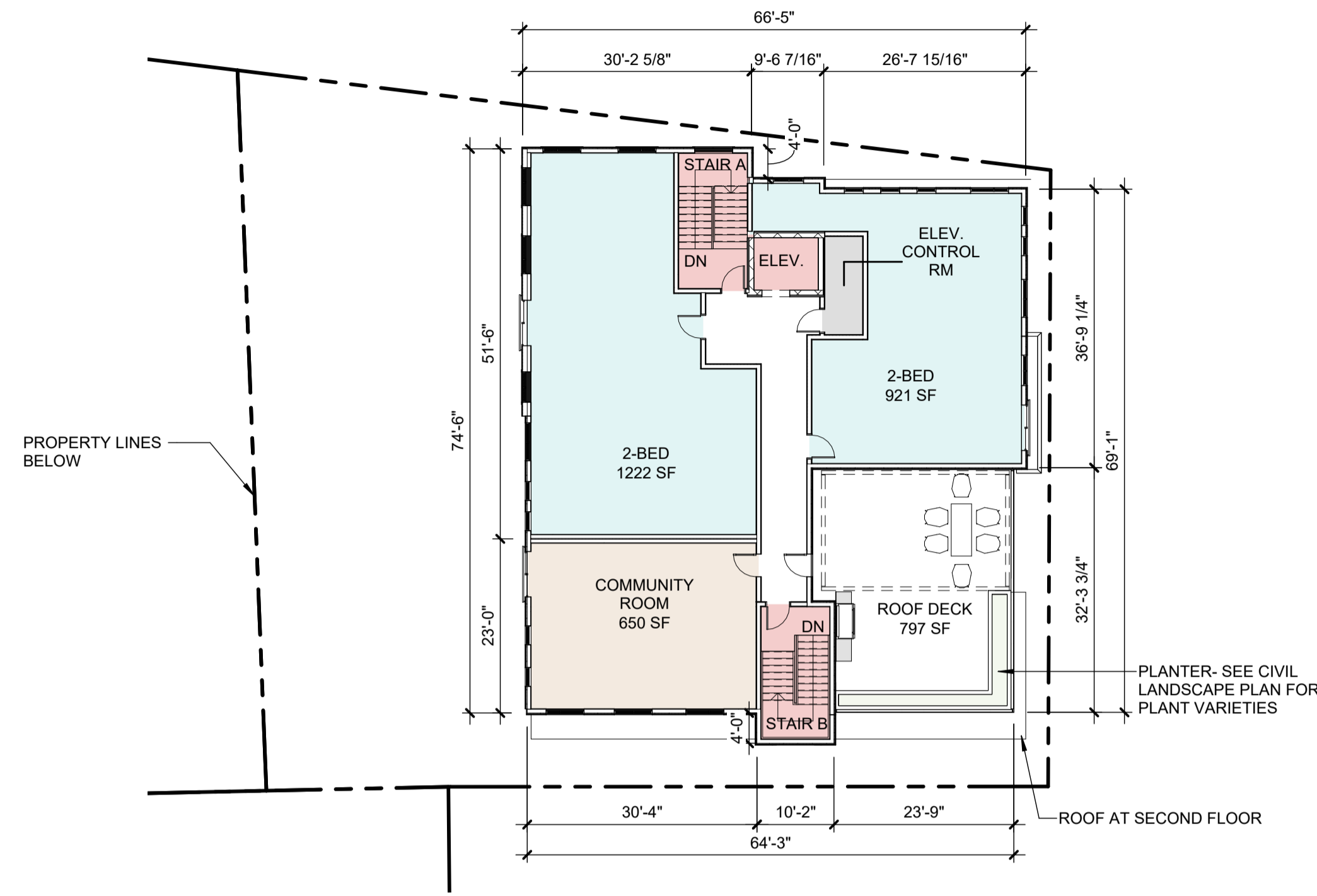
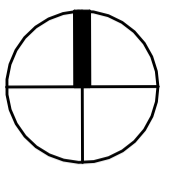


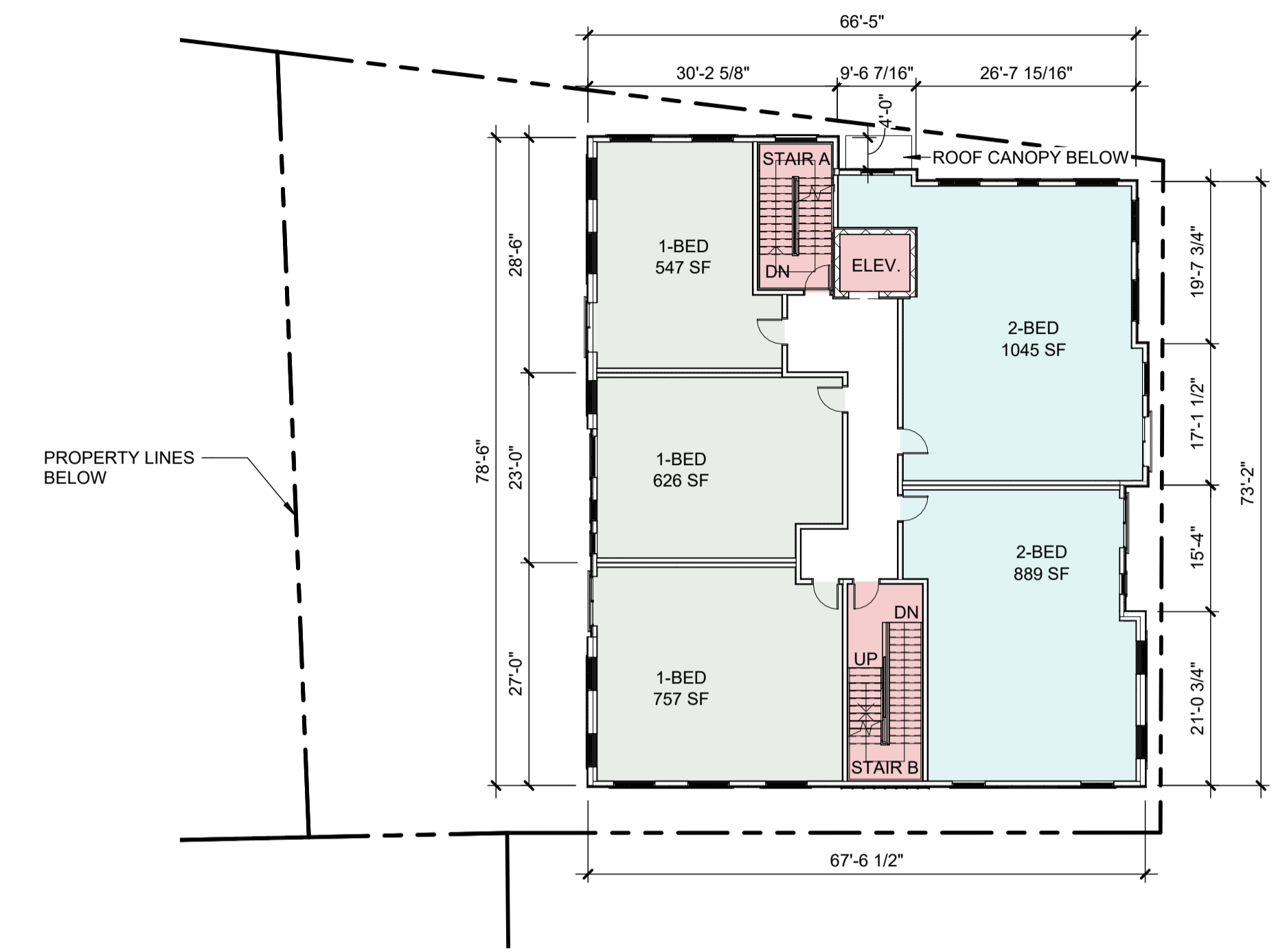
BUILDING BREAKDOWN:					
	1ST	2ND	3RD	4TH	TOTAL
1-BED	0	3	4	0	7
2-BED	0	2	1	2	5
<b>TOTAL</b>	<b>0</b>	<b>5</b>	<b>5</b>	<b>2</b>	<b>12</b>
GSF	1,520	5,057	4,782	3,934	15,293

PARKING BREAKDOWN:	
STANDARD	5 (2 EV)
COMPACT	6
ACCESSIBLE	1 VAN (EV)
<b>TOTAL</b>	<b>12</b>

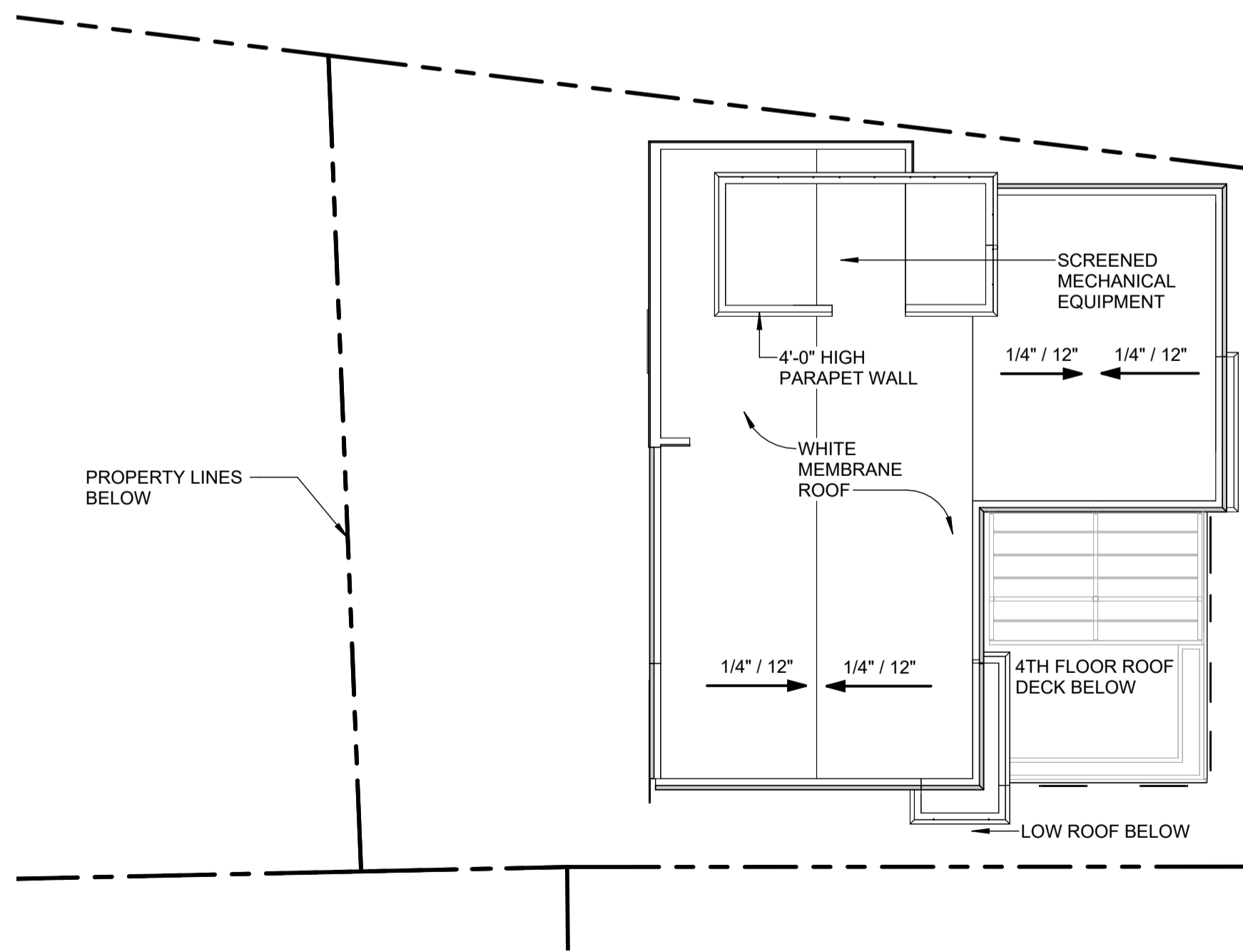
BICYCLE BREAKDOWN:	
INTERIOR/SECURE	12
EXTERIOR	0
<b>TOTAL</b>	<b>12</b>



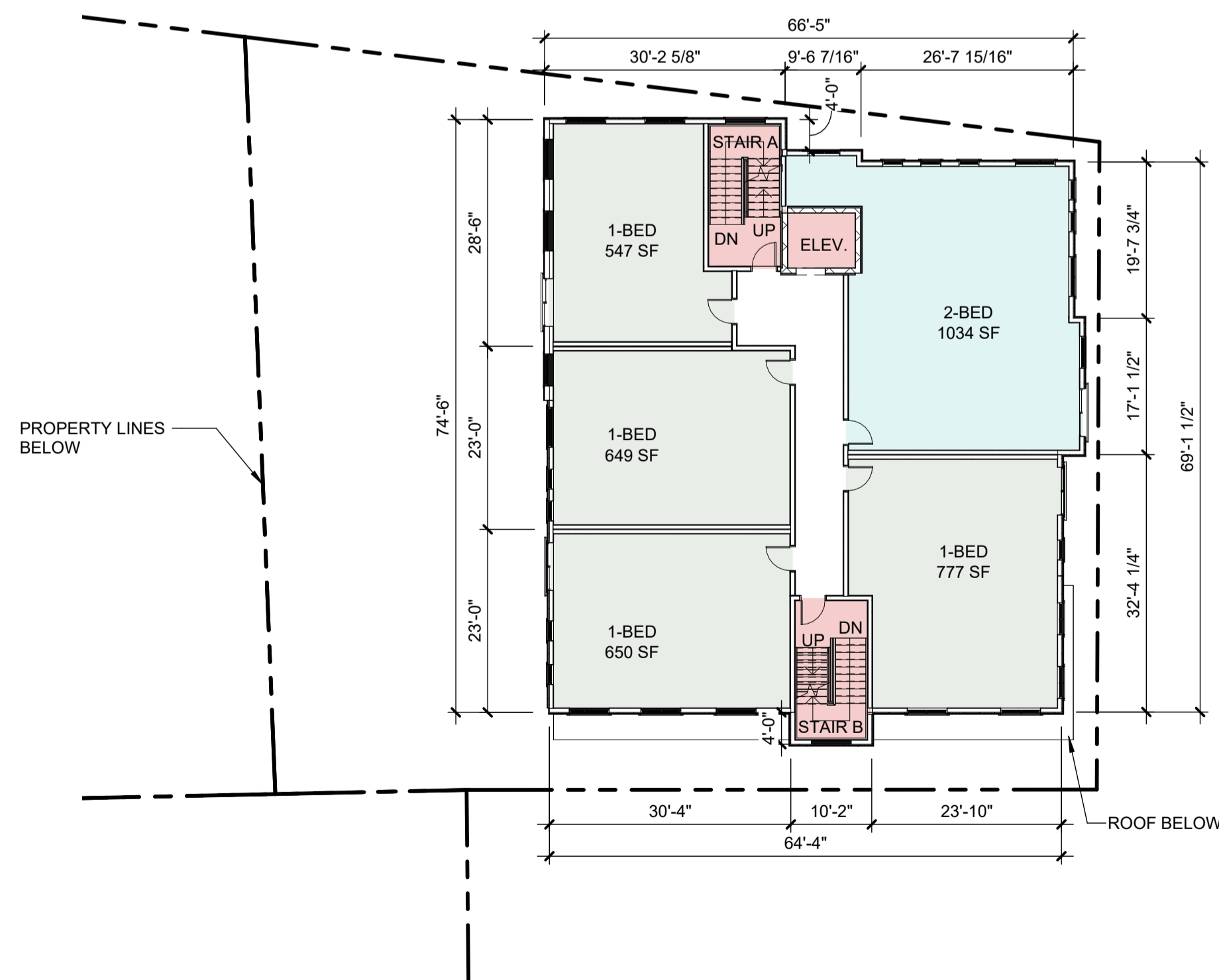
FOURTH FLOOR PLAN  
SCALE: 1/16" = 1'-0"



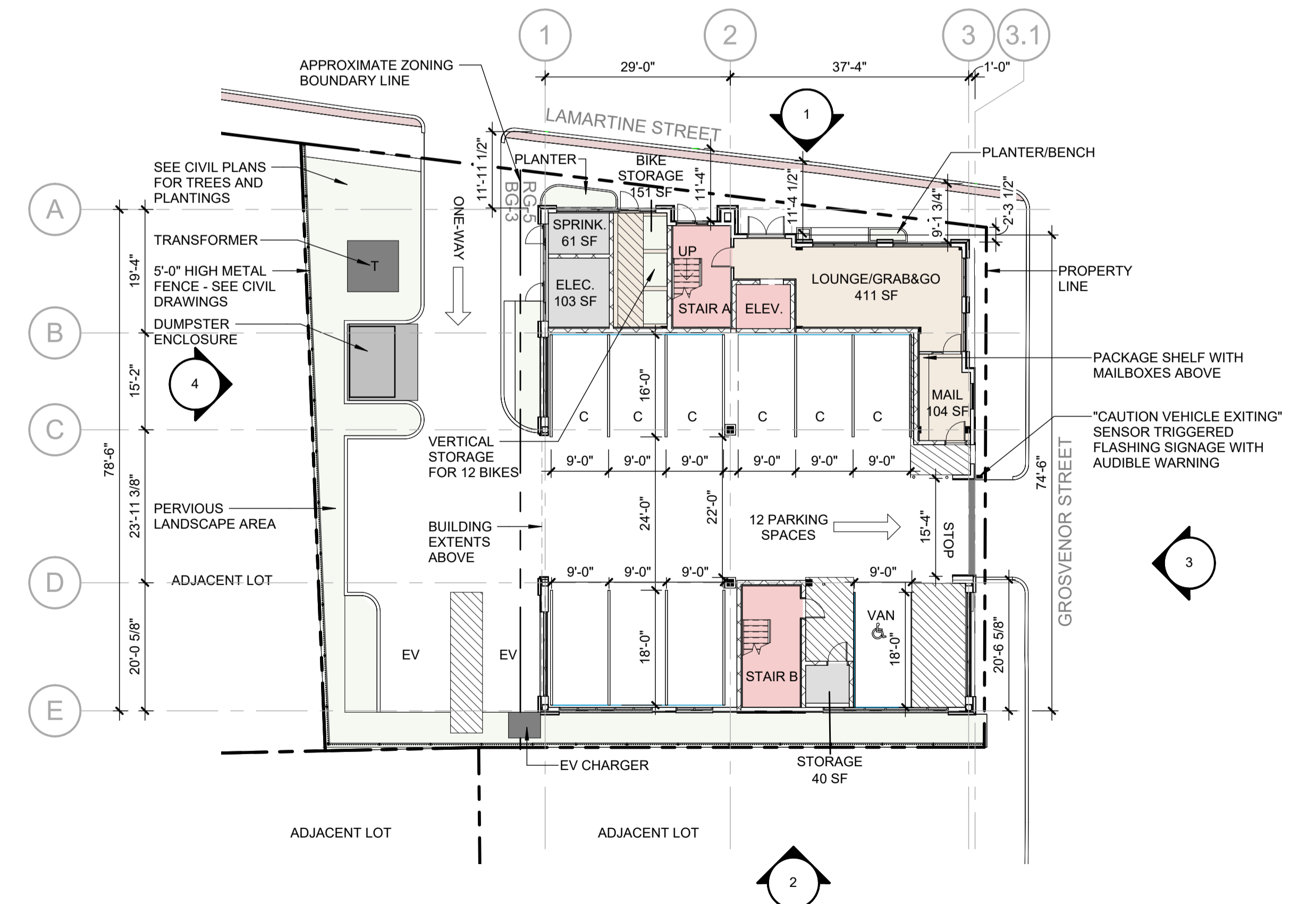
SECOND FLOOR PLAN  
SCALE: 1/16" = 1'-0"



ROOF PLAN  
SCALE: 1/16" = 1'-0"



THIRD FLOOR PLAN  
SCALE: 1/16" = 1'-0"



FIRST FLOOR PLAN  
SCALE: 1/16" = 1'-0"

# 10 GROSVENOR STREET

## FLOOR PLANS

NOVEMBER 27, 2024

10 Grosvenor St.  
Worcester, MA 01610

Shaping the Exceptional / 200 Ayer Road / Suite 200 / Harvard, MA 01451 / 978 458 2800



00000





SD - WEST 4  
SCALE: 1/8" = 1'-0"



SD - SOUTH 2  
SCALE: 1/8" = 1'-0"



SD - EAST (GROSVENOR STREET) 3  
SCALE: 1/8" = 1'-0"



SD - NORTH (LAMARTINE STREET) 1  
SCALE: 1/8" = 1'-0"

# 10 GROSVENOR STREET

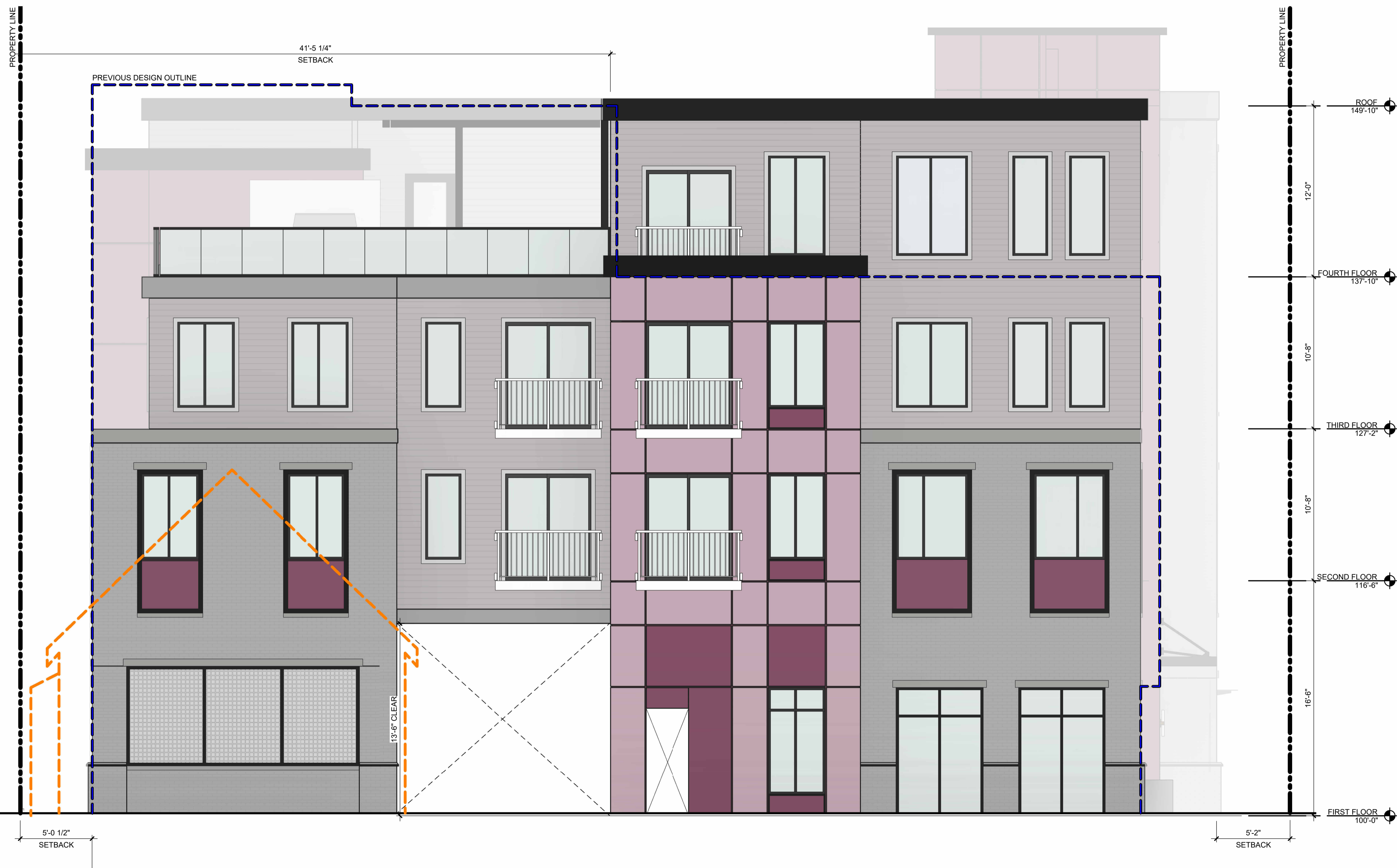
## ELEVATIONS

NOVEMBER 27, 2024

10 Grosvenor St.  
Worcester, MA 01610

Shaping the Exceptional / 200 Ayer Road / Suite 200 / Harvard, MA 01451 / 978 458 2800





SD - EAST (GROSVENOR STREET)  
SCALE: 1/4" = 1'-0"

# 10 GROSVENOR STREET

## ELEVATIONS

NOVEMBER 27, 2024

10 Grosvenor St.  
Worcester, MA 01610

Shaping the Exceptional / 200 Ayer Road / Suite 200 / Harvard, MA 01451 / 978 458 2800





## 10 GROSVENOR STREET

### PERSPECTIVES

NOVEMBER 27, 2024

10 Grosvenor St.  
Worcester, MA 01610

Shaping the Exceptional / 200 Ayer Road / Suite 200 / Harvard, MA 01451 / 978 458 2800





10 GROSVENOR STREET

PERSPECTIVES

NOVEMBER 27, 2024

10 Grosvenor St.  
Worcester, MA 01610

Shaping the Exceptional / 200 Ayer Road / Suite 200 / Harvard, MA 01451 / 978 458 2800



## 10 GROSVENOR STREET

### PERSPECTIVES

NOVEMBER 27, 2024

10 Grosvenor St.  
Worcester, MA 01610

Shaping the Exceptional / 200 Ayer Road / Suite 200 / Harvard, MA 01451 / 978 458 2800